

# Fiat Doblò Cargo



**FIAT**  
COMMERCIAL  
VEHICLES



Performance figures supplied by Fiat SpA.

Products offered for sale may differ from those described or illustrated in this brochure due to later production changes in specifications, components or place of manufacture. The contents of this brochure are therefore to be treated as representations as to the current availability of products as described, or as to products actually offered for sale. Fiat Auto (UK) Ltd. reserves the right to make changes at any time, without notice, to prices, colours, materials, equipment, specifications and models and also to discontinue models. Variations in product specification do occur from time to time – please check the exact specification with the dealer at the time of order.

Fiat Auto (UK) Ltd, Fiat House, 240 Bath Road, Slough SL1 4DX

Ed. 10/05



## Space for innovation.

Welcome to the new Doblò Cargo; a cutting edge design packed with practical innovations, useful details and underpinned by the traditional Doblò qualities of toughness and safety.

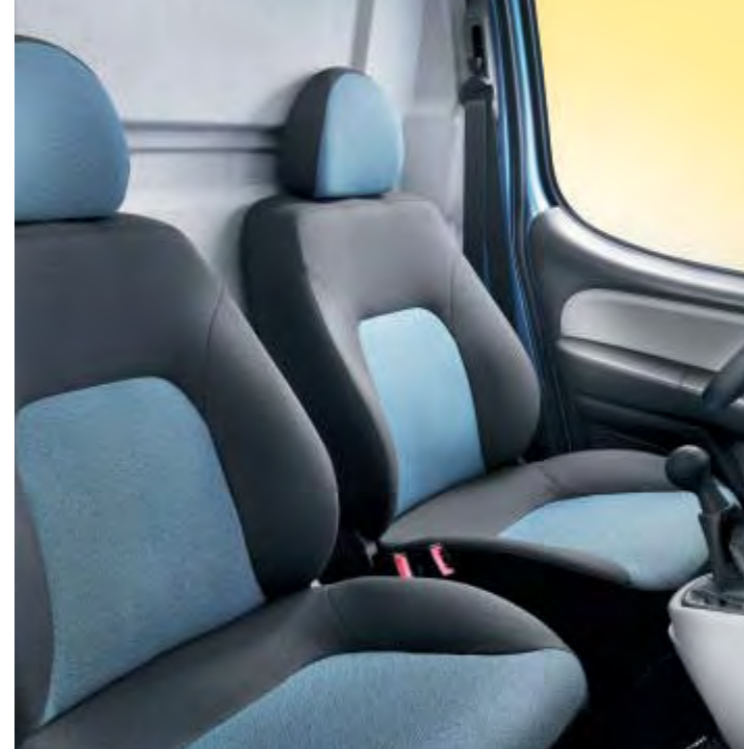
Striking and unmistakable, the Doblò Cargo range is now even more versatile, shaped to meet numerous working demands. At its heart you'll also find new engine options that bring better performance and economy. ■

## A comfortable workspace.

Smooth shapes, high quality upholstery, attractive colours and intelligent features give Doblò Cargo a stylish, comfortable cabin. A functional two-colour fascia, with all instruments at your fingertips and a console mounted gear lever make life safe and easy. Seats adjust for height and lumbar support and include armrests (with driver's seat) and head restraints. Newly designed door panels bring you integrated electric window controls and enhance the interior. This is a modern, comfortable workspace. ■

*The ceiling mounted tray is ideal for keeping all those documents, receipts, maps and odds and ends organised.*

*Interior fabrics are designed for durability, to withstand all working routines. Pattern and colour combinations match perfectly with body colours.*



## Living up to the name.

Open the rear doors and take a look inside. Notice the generous space and practical shape of the load compartment. Check for yourself how easy it is to get in and out on the low loading floor. Now you know why we call it Cargo. ■



*Doblò Cargo*



## Let's go to work.

Load up Doblò Cargo and you'll quickly understand its exceptional strengths. Large or awkward loads are swallowed without difficulty and weight is never an issue. No other vehicle in this class can handle bigger or heavier loads. With larger tyres, strengthened suspension and powerful brakes, payload – including driver – ranges from 730 to 850 kg. ■

### Cargo load area dimensions (mm)

- A Length 1680
- B Width 1470
- C Distance between wheel arches 1200
- D Height 1305/1550\*
- E Loading compartment floor height 535

\* High Roof version



*Whatever you need to take, Doblò Cargo can take it, with a payload of 730 to 850 kg.*



*The High Roof model has a loading compartment that is an impressive 1550 mm in height. Its interior volume is 3.8 m<sup>3</sup>.*



*Two sliding side doors allow you to unload bulky goods by working from both sides (standard on SX versions).*





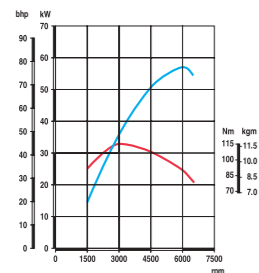
## Powerful ideas equal powerful performance.

Doblò Cargo is available with three powerful engines – two diesels: the 1.3 16v MultiJet and 1.9 MultiJet, and a 1.4 petrol option. Each engine is Euro 4 compliant. These new designs will pass all reliability, durability, performance and economy tests with ease.

MultiJet technology brings you low noise and unrivalled fuel consumption, with minimal emissions and operating costs. Maximum power is 75 bhp for the 1.3 MultiJet and 105 bhp for the 1.9 MultiJet. The petrol option generates 77 bhp and features a variable swirl combustion chamber for the ideal balance of fuel efficiency and performance. ■

### 1.4

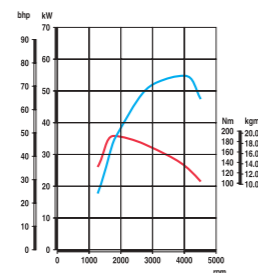
Capacity 1368 cc  
57 kW (77 bhp) @ 6000 rpm  
115 Nm (11.7kgm) @ 3000 rpm  
Timed, sequential electronic MPI, integrated with ignition, returnless system



### 1.3 16v MultiJet

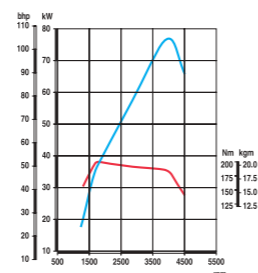
Capacity 1248 cc  
55 kW (75 bhp) @ 4000 rpm  
190 Nm (19.4 kgm) @ 1750 rpm  
Electronically controlled 'Common Rail' MultiJet direct injection with supercharger and intercooler

CUTTING EDGE DIESEL TECHNOLOGY  
The smallest and most advanced MultiJet diesel



### 1.9 MultiJet

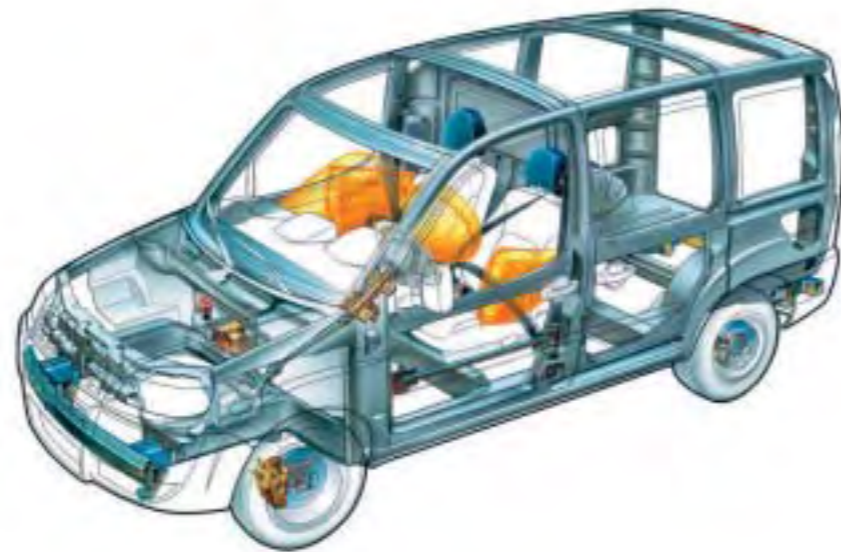
Capacity 1910 cc  
77 kW (105 bhp) @ 4000 rpm  
1200 Nm (20.4 kgm) @ 1750 rpm  
Electronically controlled 'Common Rail' MultiJet direct injection with supercharger and intercooler



# MultiJet

## Safely stowed.

Doblò Cargo accommodates and protects one load above all – you. A reinforced body with crumple zones, anti-intrusion bars, bumpers with controlled deformation bars, plus height-adjustable three point seat belts with pre-tensioners and load limiters keep you safe as you travel. So do 4-sensor ABS, electronic brake force distribution (EBD), driver, front passenger and side airbags and the Fire Prevention System (FPS). ■



### Safety

- Front crumple zones
- Collapsible pedal box system
- Collapsible steering column and knee protector pad
- Cab door anti-intrusion bars
- Fire Prevention System (FPS)
- Anti-submerging seats
- Three point seat belts with height-adjustment
- 4-sensor ABS and EBD (standard on SX)
- Driver, passenger and side airbags (driver airbag standard on all versions)



## Total support.

Doblò Cargo is designed to take the strain out of your day, especially with Fiat Accessories. For example, the loading roller lets you raise heavy loads to roof height. Then there's a pull-out carriage for the side doors and a rear ramp that enables you to load up to 250 kg and can be folded and tilted to take up no more than 120 mm of space.

Security is also well covered, with a range of alarm systems. For cutting edge communications you can choose hands-free Blue Tooth technology. Now all phone calls can be made safely and conveniently on the move. ■

### Telematics

Connect NAV™  
Radio/CD, Trip Computer, dual band GSM telephone, full duplex hands-free, SOS for services and information, GPS, LCD display, navigation by pictograms.

Connect NAV+™  
Radio/CD, Trip Computer, dual band GSM telephone, full duplex hands-free, SOS for services and information, GPS, 5" TFT screen, navigation by maps and voice controls.

*The handy luggage container with loading roller (part no. 50901154) and roof bars (part no. 50900844) offers even more space and flexibility.*

## Interior trims.



111 Calp Grey Cloth



141 Calp Blue Cloth



204 Crepe Blue Cloth



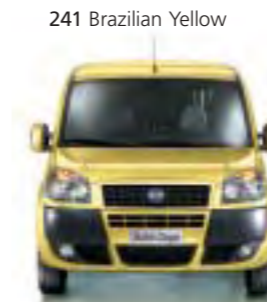
232 Crepe Orange Cloth



829 Grey Vinyl

## Body colours.

### Solid.



### Metallic.



## Body colour and interior trim combinations.

	Cargo		Cargo SX		Cargo Cargo SX
	111	141	204	232	829
<b>Solid</b>					
199 Tiziano Red	■			■	■
241 Brazilian Yellow	■	■	■	■	■
249 White	■	■	■	■	■
451 Capri Blue	■	■	■	■	■
<b>Metallic</b>					
132 Mercury Red	■		■		■
284 Underground Grey	■	■	■	■	■
505 New Batik Orange	■		■	■	■
597 Teseo Blue	■	■	■	■	■
647 Steel Grey	■	■	■	■	■
697 Chrome Grey	■		■	■	■
795 Opal Green	■		■		■
798 Astro Blue	■	■	■		■

■ = available

