

ECOSTRALIS

7.32% fuel consumption saving achieved with ECOSTRALIS

TUV SUD has certified the fuel comparison measurement by IVECO and has verified the results to be entirely credible. Additional information on the test method is available at www.iveco.com



IVECO S.p.A.
Via Puglia 35, 10156 Turin - Italy
www.iveco.co.uk

Publication Number H104982

IVECO
TRANSPORT IS ENERGY

NEW ECOSTRALIS. THE PERFECT FORMULA THAT COMBINES ECONOMY AND ECOLOGY.

Sustainable mobility is more than just an objective for Iveco: it is a way of doing business, the mindset that determines decisions on a daily basis. In fact, it is the very heart of Iveco culture, as demonstrated by the promise to keep developing increasingly sustainable products and to:

- **guarantee maximum productivity** and minimum running costs,
- **minimise the impact on the environment** in which we live and work.

ECOSTRALIS now brings these fundamental values to the commercial vehicle market, where they are applied to both medium and long range missions.

SUPPORTING CUSTOMERS FOR THE ENTIRE LIFE OF THEIR VEHICLE

ECOSTRALIS is designed to ensure optimum efficiency, the **lowest total running costs** and a higher residual value over time. Iveco focuses on these objectives for the entire life of the vehicle **teaming up with and working side by side with customers,**

- **in the buying procedure,** to help you identify:
 - the ideal product configuration for your mission,
 - the most suitable financing solution for your company,
 - a maintenance programme (servicing and repair contract, extended warranties, etc.) customised to your needs,
- when **assistance** is needed, by providing skilled personnel in 2,300 workshops throughout Europe and the certainty of a service 24 hours a day, 12 months a year for immediate help and a reduction in down time,
- offering you a 3 year / 420,000 Km warranty.



CUTTING EDGE TECHNOLOGY FOR DRIVERS

With the ECOSTRALIS, Iveco is once again at the driver's side offering a range of cleverly designed **systems** and **equipment** to improve comfort and safety and reduce fuel consumption whilst improving productivity at the same time. This is achieved by:

- providing a **comfortable, ergonomic driving environment** optimised for drivers who spend long periods of time on board their vehicles;
- offering the **most sophisticated active safety systems** (such as ESP, Hill Holder, ACC, LDWS, TPMS) greatly reducing the risk of accident, injury and damage;
- organising **training** programmes, to help make your **driving style** safer and more cost-effective;
- simplifying the work of road haulage operators by providing innovative **infotainment / fleet management systems** capable of monitoring the performance and the route taken by each vehicle in a fleet, monitoring fuel consumption, **optimising routes** and minimising inefficiency and waiting times.

The result is a perfect combination of next-generation technology and attention to the needs of operators and drivers alike. And this clever mix is made even more effective by integrating **technical elements and training courses.**

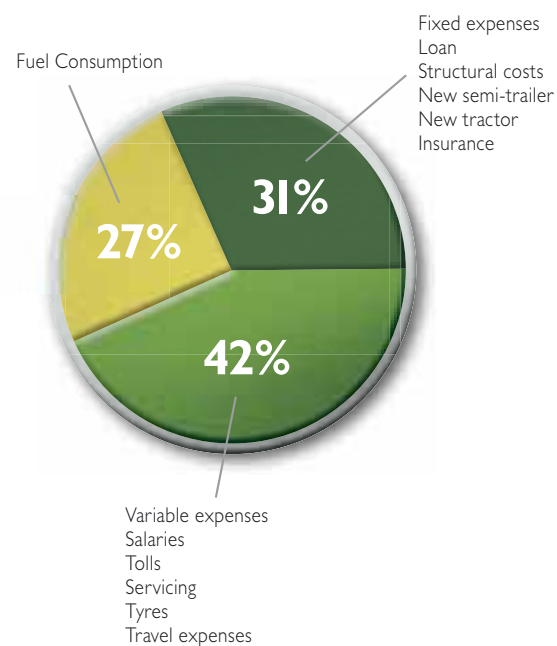


ECOSTRALIS



+565zx-y+s/EMC

VEHICLE'S TOTAL RUNNING COSTS



Choosing a very sustainable vehicle like ECOSTRALIS is an investment for the future: a responsible eco-friendly choice with a rewarding economic return. ECOSTRALIS is an **ecological and efficient** vehicle, in line with environmental protection policies adopted by all the major road haulage companies. The advantage goes well beyond image. A low emission and low fuel consumption vehicle immediately offers greatly **improved running costs** and confirms its **residual value** at the same time.

DESIGNED TO CUT RUNNING COSTS

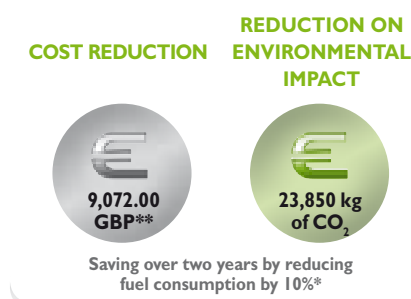
Fuel consumption amounts to nearly one third of the running cost of a commercial vehicle.

This is an aspect on which operators **can, and must, intervene** to reduce - considerably - costs and environmental impact. ECOSTRALIS is the result of a number of **optimisation enhancements** on the main components and features of the vehicle:

- engine and driveline,
- aerodynamics and rolling resistance,
- safety systems.

By combining technical vehicle improvements with specific considerations regarding hauled loads and commercial speeds, ECOSTRALIS is a champion of economy and sustainability.

The underlying integrated approach allows fuel savings up to 10%.



THE PERFECT FORMULA FOR YOUR ECONOMY.

ECOSTRALIS MAXIMISES COST REDUCTIONS.

* This calculation is based on a Stralis AS440S45TP covering 150,000 km p.a. on mixed roads and motorways with an average consumption of 30 L / 100 km and a cost of 1.20 Euros for fuel. CO₂ emissions per litre of diesel = 2.65 kg CO₂.
** All fuel savings quoted within this brochure are based on independent European test results. Reference exchange rate 0.84 Euros.

ECOSTRALIS



NEW 460 HP ENGINE

ECOSTRALIS is equipped with a new 10 litre Cursor engine specifically designed to achieve the best performance and lowest fuel consumption. The ECU implements specific algorithms for obtaining major fuel savings without compromising **performance or commercial speed**.

ECOSWITCH

Designed to reduce fuel consumption, **ECOSWITCH** is an important aid for the driver. **ECOSWITCH** activates the **iEco** program in order to optimise gear shifting strategy and performance according to actual vehicle weight, assuring the best productivity under any operating condition.

ECOFLEET

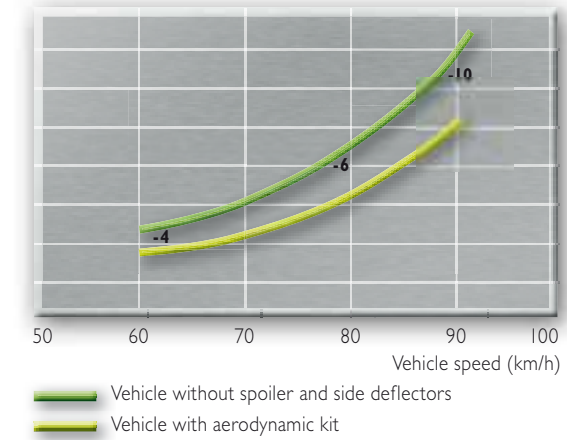
ECOFleet with Eurotronic transmission: a feature that Iveco makes available to **fleets**, particularly those who operate with multiple **driver changeover** (where drivers are not always fully conversant with the vehicle and cannot therefore utilise the vehicle to its full potential in terms of fuel consumption). In ECOFleet mode, whilst allowing the driver to shift gear when needed (e.g. when starting up and before and after travelling uphill), manual use of the transmission is partially inhibited to optimise gear shifts and reduce the possibility of human error.

AERODYNAMICS

Aerodynamics is one of the factors which most affects consumption: it is estimated that at approximately 85 km/h, **40% of fuel** is used to overcome air resistance. For this reason, ECOSTRALIS adopts the best solutions to reducing aerodynamic resistance with a kit consisting of **roof spoiler and side deflectors between cab and semi-trailer**, and also chassis side streamers. The result is an average **fuel saving of 6%** (with peaks of up to 10%) when compared to a vehicle without the kit.

Furthermore, when travelling in the range 85 to 90 km/h, **reducing the commercial speed by 2 km/h** can save 2% of fuel.

CHANGES IN CONSUMPTION (%)



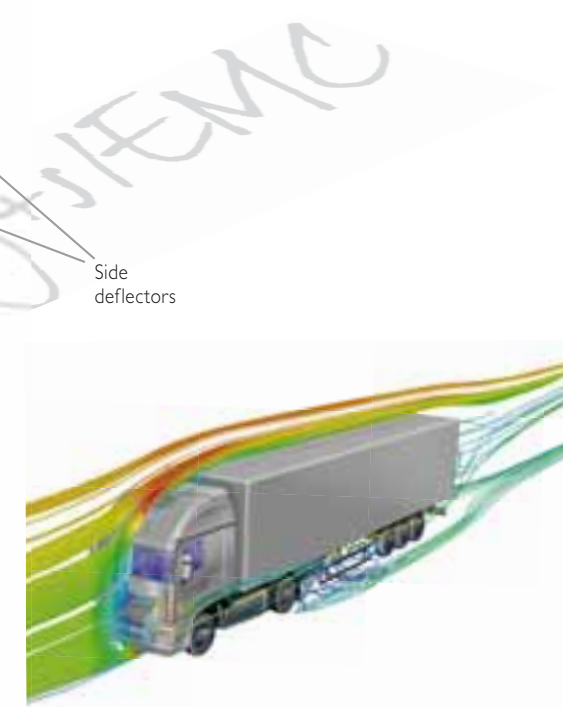
**ECOSTRALIS
MAXIMISES
COST REDUCTIONS.**



Saving over two years by reducing speed by 2 km/h*

Final drive ratio

The aerodynamic kit improves the aerodynamic penetration coefficient (Cx) of the vehicle to the advantage of fuel consumption.





**ECOSTRALIS
MAXIMISES
COST REDUCTIONS.**

TYRE PRESSURE

An **optimal tyre pressure** is crucial for many reasons:

- it is the key to road holding and travelling **safety**,
- it **reduces wear** and consequently ensures a longer life for an expensive component,
- and, last but not least, it allows a **considerable reduction in fuel consumption**.

A reduction under 10% of the nominal tyre pressure creates a noticeable increase of consumption because of higher rolling resistance, without considering the costs caused by irregular tyre wear.

ECOSTRALIS adopts **TPMS** (Tyre Pressure Monitoring System) which provides information to the driver on tyre pressure in real time.

An indicator in the cab shows when pressure is low so that the problem can be solved immediately.

AUXILIARY SYSTEMS

Auxiliary components, like the supplementary heater and air conditioning, improve comfort but must be used wisely to save fuel.

The use of these components may cause an increase in fuel consumption of **approximately 1% each**.



Estimated saving over two years*



TPMS



Saving over two years by controlling tyre pressure*



Saving over two years, considering a reduction of engine rpm (of approximately 100 rpm)*

FINAL DRIVE RATIO

In order to obtain the best fuel consumption it is important to choose a final drive ratio suited to your mission and Iveco has a wide range of possibilities for all transport types. The right final drive ratio allows the engine to run as much as possible in the **“green zone”** of the rev counter indicating that the engine is running at optimum efficiency with the lowest specific consumption.

FINAL DRIVE RATIO	REAR AXLE TYRE	Rpm at 85 km/h	Rpm at 87 km/h	Rpm at 90 km/h
2.64	315/70	1209	1237	1280
2.85	315/70	1303	1334	1380
	315/80	1233	1262	1305
3.08	315/80	1332	1363	1410

Cursor 10 Engine - Eurotronic gearbox

Designed for long distance haulage, ECOSTRALIS has a **ratio 1:2.64 with 315/70 tyres**: a solution which, combined with a specific engine mapping and new shifting logics, **optimises consumptions (up to 2% on flat motorway missions) without affecting commercial speeds**.

Next-generation 315/70 tyres allow front axle loads of up to 8 tons (previously this was only possible with 315/80 tyres).



Example of optimal engine rpm use





The Cursor 10, 460 Hp engine is the adopted standard for the ECOSTRALIS range available as a 6x2 or 4x2 tractor with either the Active Space Super³ or Active Time cabs. The Cursor 10, 460 Hp engines fitted to ECOSTRALIS meet EEV (Enhanced Environmentally friendly Vehicles) requirements: this is the strictest ecological stand in Europe today.

FLEXIBLE, ECO-FRIENDLY ENGINES

Features of the ECOSTRALIS engine include maximum torque **available at low rpm** and **constant in a wide** range of operation.

Remarkable flexibility guarantees great driving comfort, excellent performance and **low consumption** with fewer gear shifts.



200:4125

THE PERFECT FORMULA FOR RESPECTING THE ENVIRONMENT.

ECOSTRALIS MOVES TO A COMPLETE EEV RANGE.

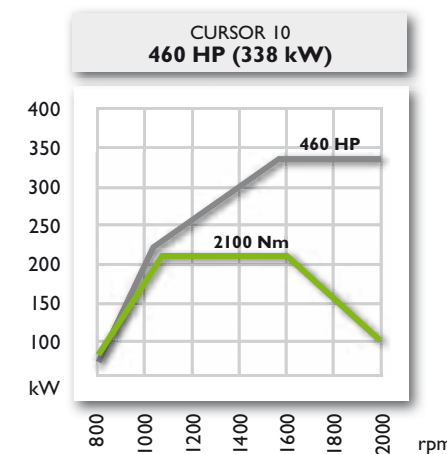
OPTIMISED FOR SAVING

ECOSTRALIS has a new engine mapping expressly optimised for reducing fuel consumption. Furthermore, by means of more careful torque delivery, linked to load and gear change patterns, significant savings can be obtained without decreasing either performance or commercial speed.

SPECIFIC LOW VISCOSITY LUBRICANTS

All Cursor engines use low **viscosity synthetic oil** which reduces consumption by a variable percentage from 1 to 2.5% according to the mission.

The oil change frequency is the longest in its class: **a remarkable 150,000 km.**





gm/r06J + 56szx-y+s/EMC



THE PERFECT FORMULA **ECOSTRALIS** MAKES PERFECT CONNECTIONS. FOR BOOSTING PRODUCTIVITY.

Infotainment technologies enable new functions for boosting your productivity. Sophisticated interaction is possible today between driver, vehicle and your company's operating room for:

- **monitoring the entire fleet** and managing daily operations in real time,
- constant tracking of **driving hours** and resting hours of drivers, to avoid fines and increase the overall availability and efficiency of the fleet,

- analysing **driving behaviour**, suggesting specific training activities on the basis of the gathered data,
- increasing your customer satisfaction by providing **quick, accurate information** on vehicle position and expected arrival time,
- **constantly tracking consumptions** by vehicle and driver,
- avoiding **wasting time** on paperwork and unnecessary vehicle stops for downloading, managing and storing tachograph memory and charts as required by EEC legislation.

Iveco, in collaboration with Qualcomm, responds to the needs of the transport world with the Blue&Me™ Fleet telematics solution based on two increasingly more advanced service levels:

- **Blue&Me™ Fleet Advanced**, designed to fulfill legal requirements, prevent fines and allow you to manage daily fleet operations,
- **Blue&Me™ Fleet Professional**, with supplementary interaction and information exchange with the driver.



ECOSTRALIS



TWO SERVICE LEVELS

An eco-friendly fleet means cost-effective management, and vice versa. With Blue&Me™ Fleet, Iveco, in collaboration with Qualcomm, offers modular solutions targeted to the various needs of small and large fleets. ECOSTRALIS has two service levels.

Blue&Me™ Fleet Advanced

Blue&Me™ Fleet Professional

Blue&Me™ Fleet Advanced

- **Wireless hands-free kit**
for connecting to the sound system of the vehicle for maximum safety while driving without distractions.
- **Remote Tachograph data download**
for downloading data from the tachograph memory from a remote location. This prevents unnecessary vehicle stops and automates administrative jobs.
- **“Assistance Non-Stop”**
for asking the Iveco Client Centre for assistance in case of breakdown. The system sends data on the vehicle, allowing immediate, accurate positioning and troubleshooting of faults.
- **Track and trace**
for determining vehicle position in real time.
- **Driver hour's management**
for monitoring driving hours, rest hours and the driver's work.
- **Trip, fuel & driver identity management**
for transmitting the main information on the mission, the driver and the vehicle.
- **Back office integration**
for integrating data transmitted during various logistic planning software programs.

Blue&Me™ Fleet Professional

in addition to Blue&Me™ Fleet Advanced functions

- **Messaging**
for receiving and sending messages between driver and company.
- **On Tracks**
for signalling approach to selected targets.
- **Truck navigation**
for navigating and integrating specific commercial vehicle attributes.
- **Workflow**
for integrating mission data and navigation functions.
- **Driver dashboard**
for extended viewing of driving and rest data in accordance with the law in force.
- **Trailer&Refeer**
for managing trailer information (coupling/uncoupling, temperature).



**ECOSTRALIS
MAKES PERFECT
CONNECTIONS.**

Blue&Me™ Fleet is a dynamic system undergoing continuous improvement. It allows an increasingly more advantageous interaction with the vehicle and a **more modern, safe and efficient way of managing haulage fleets.**

All this and more, without forgetting the benefits, in terms of time and telephone costs, between company and driver. The experience of fleet operators using infotainment systems indicates that by using Blue&Me™ Fleet you can cut average fleet

consumption from 5% to 9%, depending upon the goods being transported and driver changeover frequency.



Saving over two years considering an average saving of 7%*

ECOSTRALIS

THE PERFECT FORMULA ECOSTRALIS MAINTAINS PERFECT CONTROL. FOR TOP CLASS SAFETY.

A road accident can be caused by three factors:

- **road**, weather or visibility conditions;
- **driver error**;
- sudden problem with the **vehicle**, such as a punctured tyre.

ECOSTRALIS has an answer for all of these factors offering **the most advanced technologies for safety** – from accident prevention to driving support systems.

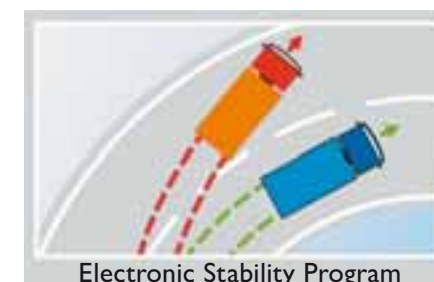


TPMS

Tyre Pressure Monitoring System is an electronic system which monitors the air pressure inside a tyre and provides information on faults in real time to the driver. In addition to improving vehicle safety, TPMS helps the driver plan tyre maintenance and contributes to reducing fuel consumption.

ESP

Electronic Stability Program is a system that operates in the event of a swerve to control engine power and to brake the wheels individually and with different intensities until a stable trajectory is re-established. It is effective to correct understeer or oversteer as a result of miscalculating your line through a bend and in sudden changes of direction.



Electronic Stability Program

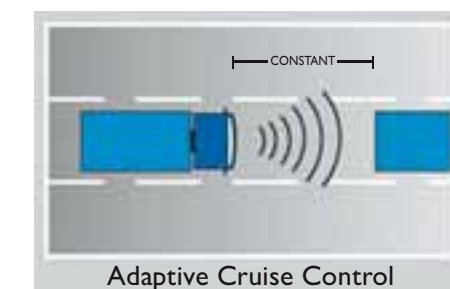
It can prevent **45%** of accidents caused by miscalculating bends

HILL HOLDER

Hill Holder is an auxiliary system that allows safe and easy hill starts. The system prevents the vehicle from rolling backwards for a few seconds when moving foot from brake to accelerator. Hill Holder removes the risk from starting off on hills, avoids the need to ride the clutch and reduces tyre wear, too.

ACC

Adaptive Cruise Control is an intelligent system that helps you cruise at whatever speed you choose, but also monitors your proximity to the vehicle in front. If you become too close and fail to maintain a safe distance, the system automatically activates the engine brake, the interarder, eurotronic down change and the service brake, if necessary.

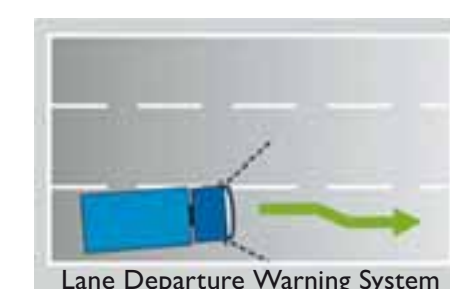


Adaptive Cruise Control

It can prevent **70%** of pile-ups on motorways

LDWS

The **Lane Departure Warning System** sounds a warning buzzer if you wander across the lines of your lane without having indicated your intention to do so. The system is extremely effective in preventing accidents caused by distraction or sleepiness.



Lane Departure Warning System

It can prevent **50%** of accidents caused by lane changing

THE PERFECT FORMULA FOR OPTIMISING DRIVING. ECOSTRALIS MEANS DRIVER TRAINING COURSES.

Driving style is a key factor which greatly impacts on vehicle efficiency. Driving correctly can allow fuel savings of **up to 12%**. Changing driving style is very simple and very effective and can easily be achieved by involving drivers in targeted training sessions.



Saving over two years by expert drivers (-3%)*



Saving over two years by drivers following training and benefiting from improvement (-12%)*



LESS FUEL, MORE KILOMETRES WITH IVECO DRIVER TRAINING

Iveco offers you or your drivers the opportunity to participate in a **cost-effective driving course**.

These driving courses are practical tools for increasing your skills, getting to know your vehicle better and making the most of advanced training on **how to adapt your driving style to save fuel**.

COURSE METHODS

The courses are ideally suited to ECO-STRALIS owners as they provide instruction on the best driving techniques for today's technologically advanced trucks, aiming to improve driver skills, reduce fuel consumption and increase safety and eco-friendliness. The Iveco driving instructors assess drivers at the beginning and end of the workshop to highlight how their fuel consumption improves, regardless of whether they are a newly qualified driver or an experienced industry hand.

INFOTAINMENT SUPPORT

The **Blue&Me™ Fleet** system available on ECOSTRALIS can constantly monitor the performance of all vehicles in the fleet, identifying problems, such as excessive fuel consumption.

It can be used as a means to identify drivers to invite to training courses and then subsequently monitor their improvements.





0.3 / 200 = 200: 0.125

THE BENEFITS OF IVECO CUSTOMER SERVICE

No-one knows ECOSTRALIS better than the people who built it: this is why only Iveco can offer a complete service of excellence, along with the skills and speed required for carrying out each service job in the best and most efficient way. Correct, punctual servicing allows you and your vehicle to travel safely and maintain low fuel consumption.

THE IVECO SERVICE NETWORK

Iveco's service network is one of the largest in Europe. With over 2300 dealerships and workshops you will always find a team of expert technicians using state-of-the art diagnostic tools wherever you travel. Choosing the Iveco service network means the guarantee of genuine Iveco spare parts, the only ones that keep your vehicle in shipshape condition.

APLUS EXCELLENCE

A guaranteed way to solve any problem is to ensure that workshops operate at the highest level of specialisation. APLUS workshops meet this objective by achieving excellent quality standards. Workshop performance, availability of specialist equipment, training of workshop staff, quality and breadth of available services (including opening hours), and business management are all measured and monitored by Iveco. Workshops achieving APLUS standard ensure Iveco customers the highest service levels available.

ANS (ASSISTANCE NON-STOP)

With Assistance Non-Stop, the Iveco Customer Centre is ready to help and assist you at any time, 24 hours a day, 7 days a week. Assistance Non-Stop is a roadside assistance programme operated via a telephone help service available throughout Europe. A team of expert operators, capable of activating the Iveco service centre located closest to your vehicle, will keep in touch with you and inform you on the progress of your repair until your vehicle is back in service and on the road again.



NEW

With ECOSTRALIS Blue&Me™ Fleet, Assistance Non-Stop is even simpler and more immediate: faults detected by the control units of the vehicle are directly sent to the Iveco Client Centre along with the vehicle's GPS reading for immediate position determination.

THE PERFECT FORMULA FOR A WORLD OF SERVICES. ECOSTRALIS MAXIMISES CUSTOMER SERVICE.





**ELEMENTS
WORRY FREE DRIVING WITH
IVECO**

Elements offers modular, flexible service contracts with solutions designed to follow the real needs of Iveco vehicles and to maintain their value over time. A guaranteed service which certifies the skills and professionalism of the Iveco network, as well as the original materials used for service interventions.

ELEMENTS PROVIDES

- 100% FLEXIBILITY**
Assistance tailored to your needs
- 100% TRANSPARENCY**
Periodical fee established in advance: no surprises
- 100% EFFICIENCY**
100% Genuine Iveco replacement parts
- 100% COMPETENCY**
Specialised training and next-generation diagnostic tools
- 100% SAFETY**
Perfect efficiency and reliability of your vehicle
- 100% VALUE**
The value of your vehicle is maintained over time

IVECO SHOP

Iveco Shop is the accessory range exclusively designed for Iveco vehicles. All Iveco Shop products are designed to provide top quality combined with state-of-the-art design, technological innovation and safety. For ECOSTRALIS, Iveco Shop offers:



The new Fresco 3000 air conditioning unit is Iveco's offering to guarantee maximum comfort into your cab's berth, day and night thanks to refrigerating power at the top of its category (90 W-3245 BTU/h). Operating silently, whether the engine is running or not, it regulates the temperature and reduces humidity as only a real air conditioner can.
Part Number 500025707



The Moov Spirit V735 TV boasts an exceptional 7" screen, which is indispensable on longer journeys as a result of having facilities for both navigation and TV entertainment. Thanks to the integrated DVB tuner, it allows you to access hundreds of digital TV channels and radio stations. Also, with 2GB of integrated

memory which is expandable via a MicroSD slot, you can watch your own films in MPEG4 or DivX format, listen to thousands of MP3 music files and also store and display hundreds of photos.
Part Number 500043907



A fuel anti-theft device made from aluminium. Tested up to 120 litres per minute, the device does not hinder refuelling. Equipped with a valve, it prevents fuel being siphoned from the tank, even when it is completely full and also prevents spillage.
Part Number 92954630



AdBlue tank cap with locking key and internal bayonet fitment.
Part Number 500025779



Driver's travel kit.
Part number 500036030

**IVECO
CAPITAL**

**IVECO CAPITAL YOUR GATEWAY
TO THE WORLD OF IVECO**

For over 20 years Iveco Capital have supported the sales of Iveco products, funding the complete range of light, medium and heavy commercial vehicles with tailored financial and fleet management solutions. Our principal aim is to help customers fund their vehicles in the most beneficial manner for their individual operations. Iveco Capital operates in 17 countries and provides support to Iveco customers in all of the main European markets.

Hire Purchase

This solution is popular with operators looking to acquire ownership of the vehicle. It can cover up to 100% of the vehicle's selling price and enables you to take delivery of the asset straight away, but with payments spread over the life of the vehicle and the option of keeping the asset at the end of the term for a nominal fee. Interest on payments may be tax deductible.

Finance Lease

Under a finance lease agreement vehicles are hired to you for a fixed period without the option of ownership, and at the end of

the primary period you may choose to continue to rent the asset for a further period at a nominal rate or to act as an agent in its disposal.

Operating Lease

An operating lease is a financial agreement where the asset may be treated as an off balance sheet item and Iveco Capital retains ownership. Customers selecting this option agree to specific usage parameters for the vehicles at the outset and assuming these do not vary significantly, the monthly payments are fixed for the duration of your contract.

Under the leasing options VAT is payable on the monthly rentals, not the purchase cost of the asset, and rentals should be allowable against the taxable profits.

Additional features such as repair and maintenance and fleet options would take an Operating Lease product into the financial solution known as **Contract Hire**.

Contract Hire

Contract Hire is essentially a rental covering anything from: comprehensive repair and maintenance options on chassis, bodywork and ancillary equipment, breakdown cover, road fund licence fees, tyre management, relief vehicle provision, collection and delivery and almost every other aspect of fleet management.

**ECOSTRALIS
MAXIMISES
CUSTOMER
SERVICE.**

The new **ECOSTRALIS** puts its positive, clean, sustainable energy at the service of your business and the future of haulage. **Better performance, more respect for the environment, more connectivity, and greater attention to driving cycles** make **ECOSTRALIS** more economically and ecologically attuned.

E=MC²

ECOSTRALIS MOVES THE CHANGE.

THE PERFECT FORMULA FOR RESPECTING THE ENVIRONMENT.

ECOSTRALIS MOVES TO A COMPLETE EEV RANGE.

- Cursor 10 engine, compliant with EEV, the strictest ecological standard in force in Europe today
- Low CO₂ emission engines

THE PERFECT FORMULA FOR YOUR ECONOMY.

ECOSTRALIS MAXIMISES COST REDUCTIONS.

- New 460 HP engine
- ECOSwitch mode
- ECOfleet mode
- Tyre Pressure Monitoring System
- Aerodynamic kit

THE PERFECT FORMULA FOR BOOSTING PRODUCTIVITY.

ECOSTRALIS MAKES PERFECT CONNECTIONS.

- Blue&Me™ Fleet infotainment system with two service levels
- Assistance Non-Stop

THE PERFECT FORMULA FOR TOP CLASS SAFETY.

ECOSTRALIS MAINTAINS PERFECT CONTROL.

- Active Cruise Control
- Lane Departure Warning System
- Electronic Stability Program
- Hill Holder
- Tyre Pressure Monitoring System

THE PERFECT FORMULA FOR OPTIMISING DRIVING.

ECOSTRALIS MEANS DRIVER TRAINING COURSES.

- Iveco / FTA Driver Training
- The Blue&Me™ Fleet system for verifying driving style improvements after attending courses

THE PERFECT FORMULA FOR A WORLD OF SERVICES.

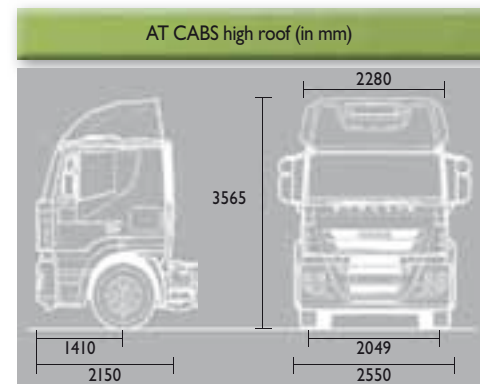
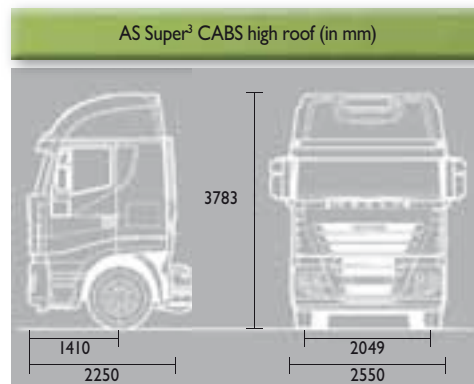
ECOSTRALIS MAXIMISES CUSTOMER SERVICE.

- Assistance and servicing programmes: Elements
- 100% genuine spare parts
- Iveco Shop accessories
- Financial solutions Iveco Capital
- Offering you a 3 year / 420,000 Km warranty



THIS IS THE CONFIGURATION TO MOVE CHANGE.

ENGINE	CURSOR 10 EEV	
Power (HP) rpm	309 / 420 from 1550 to 2100	338 / 460 from 1550 to 2100
Power (Nm) rpm	1900 from 1050 to 1550	2100 from 1050 to 1550



STANDARD EQUIPMENT

- Active Space Super³ Cab
- Adjustable roof spoiler and side spoilers
- Colour coded chassis side streamers (4x2 T/P)
- 460 Hp EEV Engine
- ECOSWITCH
- Eurotronic with ECOfleet
- Centre axle lifting device (6x2 TX/P)
- 315/70R 22.5 Greensaver tyres
- 2.64 axle ratio
- Telematics: Blue&Me Fleet
- EBS (incorporating ABS & ASR)
- ESP (Electronic Stability Program)
- Hill Holder
- Differential lock
- Jost sliding fifth wheel
- Air suspended heated, lumbar support drivers seat
- Drivers armrest
- Integrated comfort seat (passenger seat)
- Radio / CD
- Air Conditioning
- Central locking
- Air suspension cab
- Cab coloured plastics (bumper skirts, steps, cab side trim)

OPTION PACKS

COMFORT PACK

- Leather steering wheel
- Automatically controlled air conditioning
- Air suspended passenger seat
- One piece lower bunk & central storage & upper bunk

LUXURY PACK

- Heated windscreen
- Leather steering wheel
- Automatically controlled air conditioning
- Leather heated and lumbar support drivers seat
- Leather swivelling heated and lumbar support passenger seat
- One piece lower bunk & central storage & upper bunk

SAFETY PACK

- TPMS (Type Pressure Monitoring System)
- ACC (Adaptive Cruise Control)
- LDWS (Lane Departure Warning System)

TECHNOLOGY PACK

- TPMS (Type Pressure Monitoring System)
- Battery charging socket
- Digital axle weight indication +/- 2% tolerance

More information and details on the range are available on the Iveco website.

For those of you who want to get to know the world of Iveco better:

www.iveco.co.uk

The information and pictures in this catalogue are only an example. Iveco reserves the right to make any modifications it deems necessary for technical or commercial purposes, at any time and without prior notice.